



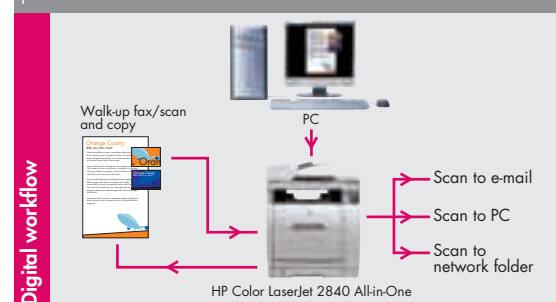
HP Color LaserJet 2840 All-in-One

Your 5-in-1 creative and business centre. Network ready, ideal for small and medium businesses.

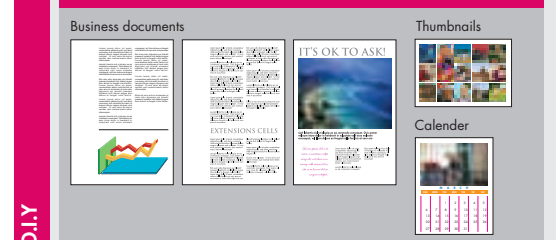
- Exceptional high-quality colour documents
- Convert hardcopy documents into digital format for easy archiving, distribution or sharing
- Create brochures and flyers in-house

Simple and fast—saving time and cost

Streamline your document workflow with digital workflow and create your own professional business documents. All these with just one device.



D.I.Y.—professional colour business documents and collateral



HP Color LaserJet 2820 All-in-One

Your 3-in-1 business centre for professional colour laser print, copy and scan (network-ready).

Whether it is in black-and-white or colour, the HP Color LaserJet 2820 All-in-One gives you high quality, professional documents and DIY marketing materials that help you look impressive with your customers.

Family line-up

—there's one that meets your needs

HP Color LaserJet 2820 All-in-One (3-in-1) print, copy and scan

- 4/20 ppm
- HP PCL6/HP postscript level 3 emulation
- ImageREt 2400, FastRes 1200
- Up to 1200 dpi optical, 24 bit CCD colour scanner
- 96 MB RAM, 4 MB Flash
- 50-sheet ADF
- 125-sheet MP tray
- Hi-Speed USB 2.0
- 10/100T integrated

HP Color LaserJet 2840 All-in-One (5-in-1) print, scan, copy, fax and digital imaging

All functions of HP Color LaserJet 2820 All-in-One with the addition of:

- 33.6K G3 fax
- 250-sheet tray
- Photo card slots
- 120 quick-dials
- 4 MB fax memory

Maximise productivity with HP Color LaserJet All-in-Ones



If the product is:	Can I ?						
	Send a print job	Receive a paper fax	Send a paper fax	Receive a PC fax	Send a PC fax	Scan to the PC	Copy
Printing a file	Yes. Prints when 1st job ends.	Yes. Prints when 1st job ends.	Yes.	Yes.	Yes.	No.	No.
Printing a paper fax	Yes. Prints when fax printing ends.	Yes. Prints when 1st job ends.	Yes.	Yes.	Yes.	Yes.	Yes. Copy pages scans/ prints when fax printing ends.
Receiving a paper fax	Yes. Prints when fax printing ends.	No. Phonerline is in use.	Yes. Sends when 1st fax job ends.	No. Phonerline is in use.	Yes. Sends when 1st fax job ends.	Yes.	Yes.
Sending a paper fax	Yes.	No. Phonerline is in use.	Yes. Sends when 1st fax job ends.	No. Phonerline is in use.	Yes. Sends when 1st fax job ends.	Yes, if the scanner is not in use.	Yes, if the scanner is not in use.
Copying	Yes. Prints when copying ends.	Yes. Prints when copying ends.	Yes, if the scanner is not in use.	Yes.	Yes.	No.	Yes. 2nd copy will begin when the 1st copy job ends.
Receiving a PC fax	Yes.	No. Phonerline is in use.	Yes. Sends when 1st fax job ends.	No. Phonerline is in use.	Yes. Sends when 1st fax job ends.	Yes.	Yes.
Sending a PC fax	Yes.	No. Phonerline is in use.	Yes. Sends when 1st fax job ends.	No. Phonerline is in use.	Yes. Sends when 1st fax job ends.	Yes.	Yes.
Scanning	Yes.	Yes.	No. Scanner is in use.	Yes.	Yes.	No. Scanner is in use.	No. Scanner is in use.

Why HP Color LaserJet All-in-Ones? Save time and cost

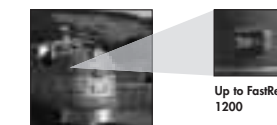
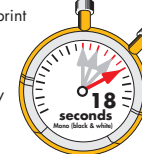
Print

- **Instant-on Technology**
 - Reduced waiting time
 - First page out
 - 18 seconds¹ (black and white)
 - 29 seconds¹ (colour)
- **High print speed**
 - Up to 19 ppm¹, A4 (black and white)
 - Up to 20 ppm¹, letter (black and white)
 - Up to 4 ppm¹ (colour)
- **Colour laser with ImageRet 2400**
 - Exceptional-quality colour output
- **Up to 50-sheet automatic document feeder**
 - Unattended printing, copying, scanning and faxing²
- **LED screen**
 - Friendly user interface; displays helpful device status and configuration messages
- **125 input multipurpose tray and optional 250-sheet second tray (standard with HP Color LaserJet 2840)**
 - Spend less time replenishing paper
- **96 MB RAM (standard); 264 MHz processor**
 - Perform complex tasks quickly
- **Fully compatible colour driver and separate black and white printer driver**
 - Full capability colour print drivers
 - The convenience of a black and white only print driver to allow users to have fast access to fast, high-quality, monochrome printing.
 - Business owners & administrators can manage access to colour printing
- **Automatic language switching** (HP PCL 6, HP postscript level 3 emulation)
 - Ensures appropriate printer language is used for each job

Instant-on Technology

Why wait?

- Faster total print job time
- Faster first page out
- More energy efficient



Up to FastRes 1200



600 x 600 dpi with ImageREt 2400

HP technologies enhance your prints



Intuitive control panel for easy control



Less user intervention with 50-sheet Automatic Feeder

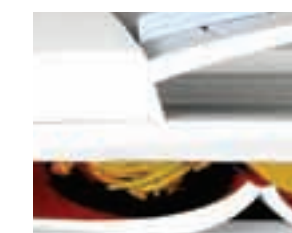


33.6 kbps Super G3 fax modem

High-performance fax capability

Scan

- **Up to 1200 dpi optical and 19,200 enhanced dpi flatbed CCD scanner**
 - For high quality scans over USB or network connection
- **Scan to email, PC desktop, PC folder or network folder**
 - Fast, simple and reliable way to capture paper-based documents in digital format
- **HP Image Zone software**
 - Scan to application, multi-photo scan with auto-detection of individual images, intelligent scanning to recognise the difference between text, lines and images



Flatbed scanner allows you to scan bounded materials like books

Digital imaging³

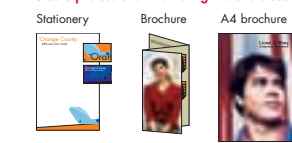
- **Supports different types of memory cards**
 - Direct photo printing, archiving or easy integration into business documents
- **HP Image Zone software for Windows**
 - View, edit, share and integrate images into documents easily
- **You can**
 - Insert card and transfer images or files to or from supported PCs and Macs over USB or network connection
 - Disable direct photo printing capability and photo memory card access
 - Or only disable the memory card access and continue to provide the direct photo printing capability
 - Protect setting with a password through the device's HP Embedded Web Server or HP Toolbox Software

Digital photo memory slots



Incorporate pictures and photos into documents easily

Create professional marketing materials easily



High quality marketing materials, in-house

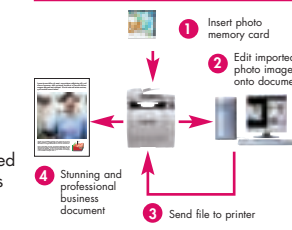
Networking & connectivity

- **Built-in HP JetDirect 10/100 Fast Ethernet wired networking**
 - Reduces the time and complexity of networked device installation and configuration.
- **Hi-speed USB 2.0 port**
 - Easy direct connection
- **HP Toolbox and HP Embedded Web Server**
 - Manage device remotely over a network. Configure settings, receive alerts, check status and control network and memory card slot access
- **HP Web Jetadmin**
 - Install, configure and manage multiple networked devices easily via HP Web Jetadmin, which is available for free download

Multitasking



Multitasking for productivity



Edit and incorporate images into business documents in 4 steps—HP Image Zone software

HP SMART printing technology

- **Replace toner cartridges easily**
 - Install cartridges using just two fingers, while the imaging drum can be installed with one hand
- **The complete printing system**
 - Designed to work together; precise matching of toner, cartridge and printer components and colour software



Easy and quick cartridge replacement

¹ Exact speed depends on system configuration, software programs and document complexity.
² Receive Fax to PC capability via USB connection only available for Windows 2000 and XP.
³ Standard with the HP Color LaserJet 2840 All-in-One.

Why HP Color LaserJet All-in-Ones?

—Save time, save cost



✓	Instant-on Technology Why wait? <ul style="list-style-type: none"> Faster total print job time Faster first page out More energy efficient 	Instant-on Technology
✓		Digital imaging
✓		Network-ready
✓		HP PCL6/HP postscript level 3 emulation
✓		Easy to use & maintain
✓		Increase productivity
✓		HP LaserJet Printers shipped with full cartridges ¹ in-box
✓	<ul style="list-style-type: none"> "A" rating for 12 years running² "A+" rating for 2 years running Clinched the top spot for 13 consecutive years 	Reliability

¹ Black cartridge yield 5,000 pages. CMY cartridges yield 4,000 pages for HP Color LaserJet 2840 and 2,000 pages for HP Color LaserJet 2820.

² PC Magazine Service and Reliability Survey.



For more information, call your local Hewlett-Packard sales office or your nearest HP authorised dealer:

HP customer information centre (for product information)

Australia	13 23 47
China	800 820 2255
Hong Kong	800 938 833
India	3030 4499
Indonesia	0800 1111 222
Korea	080 703 0700
Malaysia	1800 88 4848
New Zealand	0800 733 547
Philippines	1800 1441 6688
Singapore	1800 278 8100
Taiwan	0800 236 686
Thailand	+662 353 9000
Vietnam	+848 823 6215

HP customer care centre (for post-sales service)

Australia	13 10 47
China	800 810 5959
Hong Kong	+852 3002 8555
India	1600 112 267
Indonesia	+62 21 350 3408
Korea	+82 2 3270 0700
Malaysia	1800 80 5405
New Zealand	0800 449 553
Philippines	+63 2 867 3551
Singapore	+65 6 272 5300
Taiwan	+886 2 8722 8000
Thailand	+662 353 9000
Vietnam	+848 823 4530

For the following countries, please fax your queries to:
+65 6275 6707

- Bangladesh • Bhutan • Brunei • Cambodia • Maldives
- Nepal • Pakistan • Sri Lanka

www.hp.com/all-in-one

© 2005 Hewlett-Packard Development Company, L.P.

The information contained herein is subject to change without notice. The only warranties for HP products and services are set forth in the express warranty statements accompanying such products and services. Nothing herein should be construed as constituting an additional warranty. HP shall not be liable for technical or editorial errors or omissions contained herein.

Printed in Singapore, 2001-5181-EEP, 04/2005

HP Color LaserJet 2820/2840 All-in-One

Technical specifications

	HP Color LaserJet 2820 All-in-One	HP Color LaserJet 2840 All-in-One
Print speed¹	Black-and-white: up to 20 ppm (letter), up to 19 ppm (A4); Full page colour: up to 4 ppm (letter and A4)	
First page out	Black-and-white: 18 seconds; Colour: 29 seconds	
Print quality	Black-and-white: up to FastRes 1200 print quality (600 x 600 dpi); Colour: up to 600 x 600 dpi with ImageREt 2400	
Copy quality	Black-and-white: up to 600 x 600 dpi; Colour: up to 600 x 600 dpi with ImageREt 2400	
Copy speed	Black-and-white: up to 20 cpm (letter), up to 19 cpm (A4); Colour: up to 4 cpm (letter and A4); First black-and-white copy out: 19 seconds	
Copy settings	Contrast (lighter/darker), Quality (copy quality), reduce/enlarge 25 to 400%, 2-up, 4-up, copy collation, number of copies, paper size	
Scanning	Colour scanning supported; Resolution: up to 1200 x 1200 dpi optical or up to 19,200 x 19,200 dpi enhanced resolution	
Walkup initiated scanning	Via front control panel with Scan-to button (preconfiguration via software required)	
Remote initiated scanning	Via HP Director, TWAIN-compliant or WIA-compliant software, HP Image Zone Software	
File format	BMP, FPX, GIF, JPG (JPEG format, standard and progressive), JPG (EXIF 2.1 and 2.2), PCX, PNG, TIFF, PDF, TXT, RTF, HTML	
Maximum size	Flatbed: 216 x 297 mm (8.5 x 11.7 inches); ADF: 216 x 381 mm (8.5 x 15 inches)	
Network scanning	Yes (Network sending and receiving should be limited to a small number of network users) ²	
Faxing	Not available	Super G3 V.34 fax modem (up to 33 kbps) and 2 RJ-11 ports; Fax-send software for PC and Mac over both USB and network connectivity included with Typical/full install ³
Speed ⁴	Not available	3 seconds per page (Slerex page, standard resolution)
Features	Not available	Up to 300 x 300 dpi, forwarding, quick-dialing (120 locations), 4 MB fax memory (up to 250 pages), polling (receive only), delayed sending, distinctive ring detection, auto reduction, auto redial, phone TAM interface, telephone mode, junk barrier
Fax-send via network connection	Not available	Fax-send via network connection is capable of sending with a small number of network users ⁵ .
Photo memory card support⁶	Not available	CompactFlash [®] Type I and Type II, xD-Picture card ⁷ , Secure Digital, Memory Stick [®] , Memory Stick Pro [®] , SmartMedia, MultiMedia Card
Processor	264 MHz	
Device memory	96 MB RAM (upgradeable to 224 MB with one industry standard 100-pin SDRAM DIMM slot) with Memory Enhancement technology (MEI)	
Duty cycle	Up to 30,000 pages per month	
Paper⁸		
Input capacity	125-sheet multipurpose tray (up to 10 envelopes, 50 transparencies); 50-sheet ADF	125-sheet multipurpose tray (up to 10 envelopes, 50 transparencies), 250-sheet Paper tray; 50-sheet ADF
Output capacity	125-sheet face down bin, rear output door for specialty paper	
Sizes	Multipurpose tray: 105 x 148 to 216 x 356 mm (4.1 x 5.8 to 8.5 x 14 inches); letter, executive, legal, envelopes (No. 10, Monarch); A4, A5, B5-JIS, B5-ISO, envelopes (DLHISO, C5-ISO, B5-ISO) standard #10 postcard, JIS single postcard, JIS double postcard; 250-sheet Paper tray: 148 x 210 to 216 x 356 mm (5.8 x 8.3 to 8.5 x 14 inches); letter, executive, 8.5 x 13 inches, legal; A4, A5, B5 (ISO), B5 (JIS); ADF: 127 x 127 to 216 x 356 mm	

	HP Color LaserJet 2820 All-in-One	HP Color LaserJet 2840 All-in-One
Weights	Multipurpose tray: 60 to 177 g/m ² (16 to 47 lb), up to 220 g/m ² (70 lb) for HP Laser Photo Papers and HP Laser Glossy Papers only; 250-sheet Paper tray: 60 to 105 g/m ² (16 to 28 lb); ADF: 60 to 90 g/m ² (16 to 24 lb)	
Types	Multipurpose tray: Paper (plain, letterhead, prepunched, bond, colour, rough, preprinted, recycled) HP Color Laser Glossy Photo Paper, HP Color Laser Glossy Brochure Paper, HP Color Laser Matte Photo Paper, HP Color Laser Soft Gloss Presentation Paper, HP Laser Tough Paper, HP Color LaserJet transparencies, labels, envelopes, and card stock; 250 sheet Paper tray 2: Paper (plain, letterhead, prepunched, bond, colour, rough, preprinted, recycled); ADF: paper (plain, bond, recycled), HP transparencies, envelopes, labels, postcards, document carrier	
Connectivity	Hi-Speed USB 2.0 port, built-in HP Jetdirect Fast Ethernet wired networking	
Printer language and fonts	HP PCL 6, HP postscript level 3 emulation; Postscript Printer Description (PPD); 80 TrueType internal scalable fonts for both HP PCL 6 and HP postscript emulation	
Operating systems	Microsoft [®] Windows [®] 2000, XP (Typical/full PC install); 98 SE, Me (scan and print drivers only); NT [®] 4.0 (print driver only); Mac OS 9.2.2, 10.2.8, 10.3.x (full Mac install) Latest supported operating systems and print drivers available at www.hp.com/support/clj2800	
Network protocols	TCP/IP, Direct Mode IP, LPD; Configuration and management protocols: SLP, IGMP, BOOTP/DHCP, WINS, SNMP v1 and v2c, and HTTP	
Software included	HP Toolbox, HP LaserJet scan, TWAIN 1.9 or WIA scanner drivers, HP LaserJet fax, installer/uninstaller, HP Director, HP Image Zone for Windows, HP Document Viewer, HP All-in-One Setup Assistant (Mac), Readiris PRO Text Recognition software (not installed with device software, separate installation required)	
Dimensions (w x d x h)	497 x 532 x 523 mm (19.6 x 20.9 x 20.6 inches)	497 x 532 x 573 mm (19.6 x 20.9 x 22.4 inches)
Weight	Device: 31.6 kg (69.6 lb); As packaged approximately 36.8 kg (89 lb)	Device: 34.2 kg (75.3 lb); As packaged approximately 40.5 kg (95 lb)
Environmental ranges		
Operating temperature	15 to 32.5° C (59 to 90.5° F)	
Storage temperature	-20 to 40° C (-4 to 104° F)	
Relative humidity	20 to 70 percent RH, non-condensing	
Max operating altitude	3048 m (10,000 ft)	
Acoustic power emissions	Active: 6.6 B(A); Standby: not audible	
Power specifications⁷	Energy Star [®] compliant	
Input requirements	110 to 127 VAC (+/- 10%), 50/60 Hz (+/- 3 Hz); 220 to 240 VAC (+/- 10%), 50/60 Hz (+/- 3 Hz)	
Consumption	Active: 398 watts; Ready: 26 watts; Sleep: 20 watts; Off: 0 watts	
Warranty	One-year limited hardware onsite HP warranty, telephone and Web support (varies according to region)	

¹ Exact speed varies depending on the system configuration, software application, driver, and document complexity.
² The product was designed for personal and small business usage. For all network scanning and faxing for more than a small number of network users, customers should purchase the HP LaserJet 4100 mfp series or larger products.
³ Fax send software for supported Windows XP and 2000 based systems and Mac OS 9.2.2, 10.2.8, 10.3.x based systems; Receive Fax to PC capability via USB connection only available for Windows 2000 and XP.
⁴ Based on ITUT standard test image #1 at standard resolution. More complicated pages or higher resolution will take longer and use more memory.
⁵ Memory card support for storage capacities up to 2 GB; Direct Photo Printing capability for .jpg image files.
⁶ Papers featuring coatings and finishes designed specifically for use in ink printing devices are not compatible.
⁷ Power requirements are based on the country/region where the printer is sold. Do not convert operating voltages. This will damage the printer and void the product warranty.



HP Color LaserJet 2840 and 2820 All-in-One for small and medium businesses

—colour laser printing/laser fax¹/
PC fax¹/fax via network²/digital copying/
colour scanning/digital imaging¹

¹ Faxing and the photo memory card slot come standard with the HP Color LaserJet 2840 All-in-One.
² Fax send software for supported Windows XP and 2000 based systems and Mac OS 9.2.2, 10.2.8, 10.3.x based systems; Receive Fax to PC capability via USB connection only available for Windows 2000 and XP.

